



Ph.D. IN COMPARATIVE BIOLOGY APPLICATION REQUIREMENTS

APPLICATION DUE DECEMBER 15

BACHELORS DEGREE	Undergraduate degree from an accredited institution
OFFICIAL TRANSCRIPTS	From all institutions attended
GRE (GENERAL)	Required, taken within past five years
GRE (SUBJECT)	Recommended (in pertinent field)
THREE SUPPORT LETTERS	Required from instructors, research advisors, or other mentors
ESSAY	Description of research interests and experience
\$50 APPLICATION FEE	Required with application
PROFICIENCY IN ENGLISH	TOEFL scores required for non-native English speakers
INTERVIEW	Final candidates will be interviewed
FACULTY SPONSOR	Applicants are encouraged to contact a faculty member prior to submission of their application

OFFICE OF ADMISSIONS

The Richard Gilder Graduate School at the
American Museum of Natural History
Central Park West at 79th Street
New York, NY 10024
admissions-rggs@amnh.org
http://rggs.amnh.org

TO DISCOVER, INTERPRET,
AND DISSEMINATE—THROUGH
SCIENTIFIC RESEARCH AND
EDUCATION—KNOWLEDGE ABOUT
HUMAN CULTURES, THE NATURAL
WORLD, AND THE UNIVERSE.

AMNH MISSION STATEMENT



Richard Gilder Graduate School
American Museum of Natural History
Central Park West @ 79th Street
New York, NY 10024-5192

Phone: 212-769-5055

Fax: 212-769-5257

E-mail: info-rggs@amnh.org

Web: <http://rggs.amnh.org/>

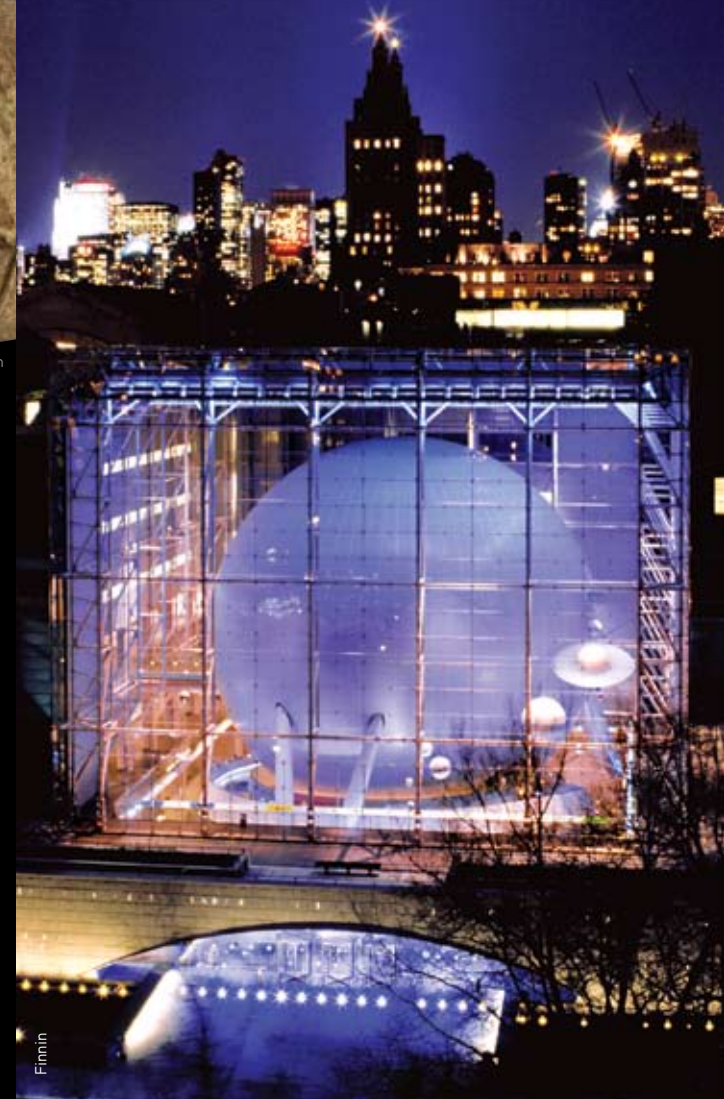


AMERICAN MUSEUM OF NATURAL HISTORY 

PHD IN COMPARATIVE BIOLOGY
RICHARD GILDER
GRADUATE SCHOOL

— AT THE —

AMERICAN MUSEUM
OF NATURAL HISTORY



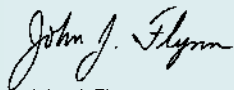
It is my pleasure to introduce you to the Richard Gilder Graduate School at the American Museum of Natural History. You may already be familiar with the Museum's outstanding exhibitions and public education programs, cutting-edge research, global expeditions, and vast collections of specimens, cultural artifacts, and astrophysical data. You may not know that we also have a long-standing commitment to academic training that has been an integral part of our mission for more than one hundred years. In 2008, we began offering our innovative Ph.D. in Comparative Biology, which makes us the only Ph.D. degree-granting museum in the Western Hemisphere. The Ph.D. degree is a natural extension of our mission: "To discover, interpret, and disseminate—through scientific research and education—knowledge about human cultures, the natural world, and the universe."

The curriculum of the Ph.D. program in Comparative Biology focuses on the history and interactions among species, within and between biotas, and across time and space. Throughout the course of study, students will have access to the unparalleled resources of the American Museum of Natural History, including its world-renowned collections, distinguished curators serving as faculty, legacy of excellence in field discovery and theoretical advances, and public mission in science education, with unique student training opportunities in exhibitions and K-12 educational programs. Students will also receive exceptional support in a number of ways, including personalized, faculty-focused mentoring; fellowships and scholarships; and a newly built state-of-the-art graduate student center within our landmark buildings.

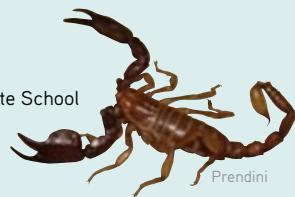
The 21st century is widely viewed as the "century of biology," and the Richard Gilder Graduate School's Ph.D. program in Comparative Biology will prepare our graduates to be leaders in this new century with careers in academia, industry, government, or the private sector. I urge you to consider becoming one of them.

Explore the wide range of the Richard Gilder Graduate School's university-level educational activities—which includes graduate fellowships and small grant programs—at our website at <http://rggs.amnh.org/>, or contact us with any additional questions at info-rggs@amnh.org.

Most sincerely,



John J. Flynn
Dean, Richard Gilder Graduate School



THE PH.D. PROGRAM IN COMPARATIVE BIOLOGY

FLEXIBILITY

- Unique combination of traditional courses and electives, *including field work*
- *Gain teaching experience*, ranging from university-level courses to the Museum's exhibition and K-12 education programs
- *Special opportunities for intensive individual investigations*

EXTRAORDINARY DEPTH

- Learn from more than *40 world-renowned faculty*
- Study *cutting-edge* tools, concepts, and methodology
- Access *unparalleled collections*, labs, and computational resources

STUDENT-FOCUSED

- *Personalized advising and mentoring* from faculty
- *Exceptional financial support* including full tuition scholarship, stipend, research budget, and health insurance
- *Career counseling and guidance* from a dedicated scientific staff

CURRICULUM

An intensive, immersive, flexible, and field-, lab-, and collections-based program of study. In this accelerated program, students will complete a combination of:

- **Core courses:** *Evolution; Systematics and Biogeography; and Grantsmanship, Ethics, and Communication* courses, giving students a broad overview of the conceptual basis, tools, and methods for studying life
- **Immersive elective courses:** allowing students to achieve depth of knowledge
- **Museum seminar series:** exposing first-year students to a broad range of research disciplines and topics through discussions led by some of the world's leading scientists
- **Teaching assistantships:** including opportunities at AMNH and partner universities or in exhibition or public education
- **Directed research:** culminating in defense of the Ph.D. dissertation



ABOUT THE AMERICAN MUSEUM OF NATURAL HISTORY

- Founded in 1869
- 18-acre, 25-building campus adjacent to Central Park
- 200 scientists, including more than 40 curators/professors
- 32 million specimens and artifacts
- One of the world's largest natural history libraries containing more than 400,000 volumes
- 120 field expeditions each year
- New forms of collecting and analysis
 - Frozen tissue
 - Genomic & astrophysical data

THE RICHARD GILDER GRADUATE SCHOOL OFFERS UNIQUE RESOURCES

- Access to one of the world's greatest natural history collections
- A legacy of leadership in field and theoretical sciences
- Interdisciplinary approaches to research
- A public mission, providing a bridge between science and society
- Newly built graduate center in historic 1897 building
- More than 75 graduate students and postdoctoral fellows in residence

